

What's New @



ENGINEERED FOR MOTION

ClearPath™ Spectrum Series: Radio Control Products

The ClearPath™ Spectrum series is our new generation of radio control products. The new S-COR Spectrum Coordinator functions much like a traditional wireless system receiver, while the S-TRX Spectrum transceiver acts as a traditional transmitter. This is where the similarities end.

All ClearPath Spectrum products feature 2.4 GHz digital two-way communication which provides increased security and more reliable signal transmission between devices.

- ▶ S-COR features a user friendly LCD screen that allows quick and easy programming.
- ▶ Pairing feature allows programming of multiple receivers with coordinator.
- ▶ Pairing also allows users to define transceiver location.
- ▶ S-TRX transmits valuable information to the S-COR that is displayed on the LCD screen. Information includes Device ID, signal strength, and battery power monitoring.



ClearPath
Spectrum



Commander™ PTM Privacy Timing Module

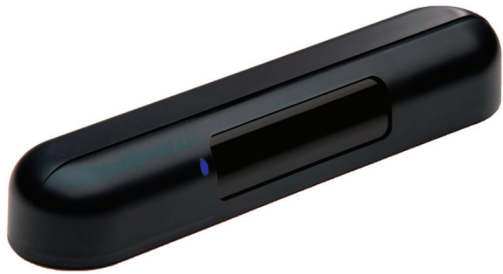
The PTM is a timing module that allows users to control an automatic door operator for a room where privacy is a concern.

- ▶ Ideal for washrooms, restrooms, clean rooms or photo development rooms
- ▶ From OUTSIDE the room, users are able to activate the door.
- ▶ Once INSIDE, users can lock the door preventing access from the outside "Push to Open" button .
- ▶ When ready to leave the room, the user pushes the "Push to Open" button which deactivates the lock and activates the door.
- ▶ A Keyswitch Override is on the exterior.
- ▶ LEDs indicate if the room is occupied!
- ▶ Fully Programmable.
- ▶ Available as PTM-Kit that includes PTM module and all push plates.

SafePath™ DH400 **5-Row Active Infrared** **Presence Detector**

The SafePath™ DH400 is an active infrared presence detector, capable of higher mounting, for use with all types of automatic doors.

- ▶ FRM-AI (Floor Reflection Method Active Infrared) detection.
- ▶ Detector can be mounted up to 13.1 feet (4m) above floor.
- ▶ Width and depth of detection pattern is fully adjustable.
- ▶ Easy to install and adjust



SafePath™ DHR3 **Combination Microwave Motion Sensor** **& Active Infrared Presence Detector**

The SafePath™ DHR3 is a combination microwave motion sensor and active infrared presence detector. It is designed to provide both activation and safety protection for automatic sliding and folding doors.

- ▶ Microwave motion and FRM-AI (Floor Reflection Method Active Infrared) provide reliable operation.
- ▶ Depth and width of pattern are fully adjustable for presence detection.
- ▶ Fully adjustable range and sensitivity of microwave motion sensor.
- ▶ Easy to install and adjust



ENGINEERED FOR MOTION

For details on any of these new products
visit us online at www.mssedco.com
or call us at (317) 842-2545